



Where You Belong



Purpose and Vision

Our Purpose

To improve the relationship between business and health through thought leadership, innovative services, and collaboration

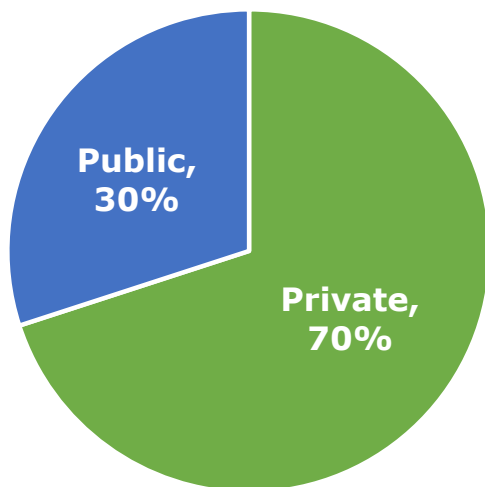
Our Vision

Healthy, vibrant communities where business thrives

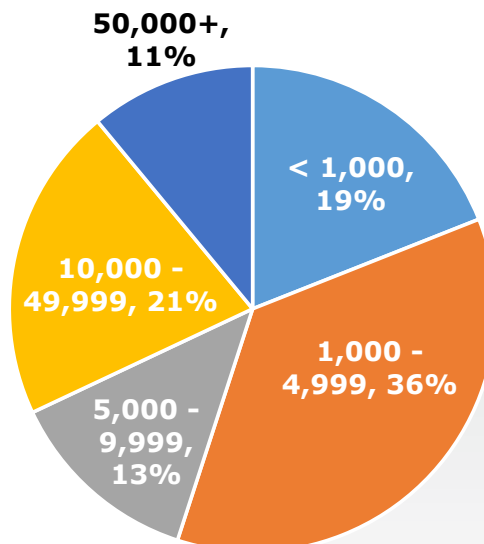
About Us

Representing more than 200 employers and union groups covering more than 2,000,000 unique individuals

SECTOR



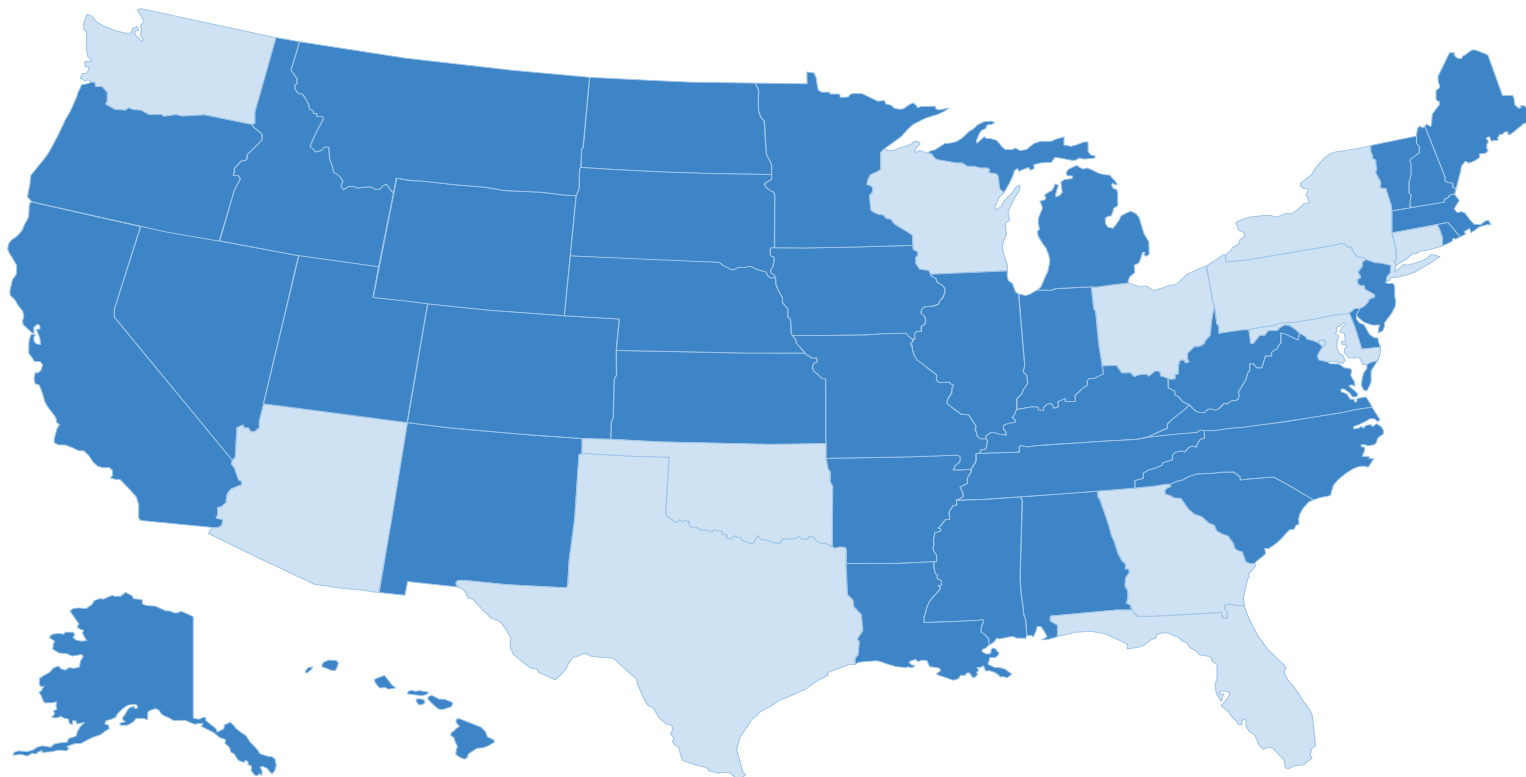
EMPLOYEE SIZE



- 100% of States
- 78% of Counties
- 43% of Zip Codes

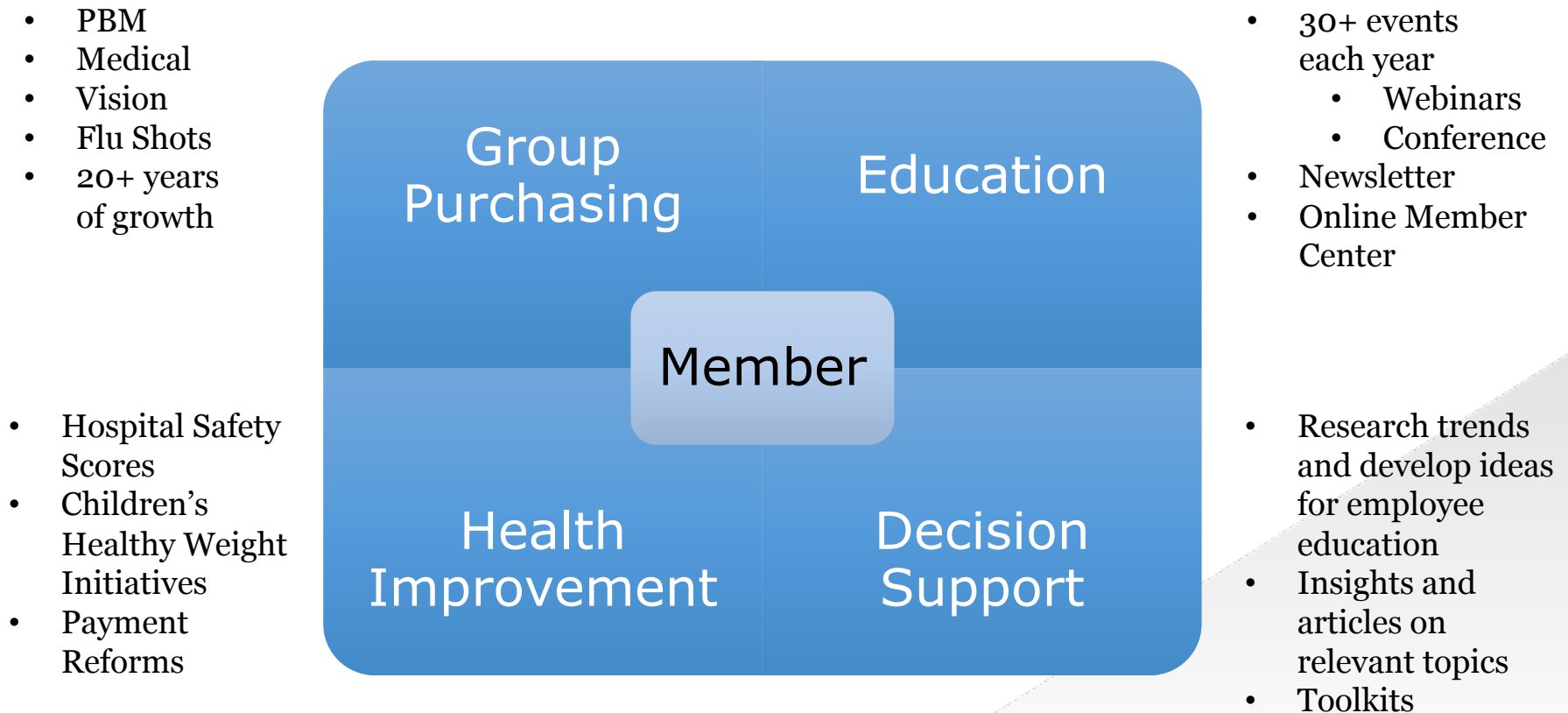


About Us – Member Headquarters





What We Do





Our Work

- **Enhancing Business**

- Educating employers' professional staff
- Reducing the cost of business through group purchasing
- Representing employers at community health table

- **Enlightening Lives**

- Working with providers to improve patient safety, quality, and outcomes
- Educating employees to be better healthcare consumers

- **Enriching Communities**

- Bridging public health policies with private sector needs
- Creating synergy among all stakeholders
- Leveraging private and public resources to improve the health of the community



Enhancing Business



health action council



Education, Tools, and Resources

- Annual Conference
- Annual Symposium
- Webinars and Live Events
- Thought Leadership Sessions
- Monthly Newsletter
- Online Member Center
 - Insight pieces on current trends in benefits and healthcare
 - Tools to make your job easier
 - Education programs – present and past
 - Discussion forums
 - Member directory
 - Account maintenance



Group Purchasing

Over 200 Employers
Representing More Than
2,000,000
Unique Individuals

Group Purchasing
Contract
Procurement

Vendor
Contracts

Band Together

**Member Driven
and Supported by:**

- Consultants
- Staff
- Legal Counsel

Negotiate prices and
terms as if a much larger
purchaser (\$700 million
in spend)





Enlightening Lives



health action council

Health Improvement

Partnering with Providers, Plans, Policymakers, and Purchasers to Promote a Community of Health

Key projects include:

- Leapfrog Hospital Safety Survey
- Primary Care Push Project
- Choosing Wisely
- Health Policy Institute of Ohio (HPIO) and Regional Health Improvement Collaborative
- Alliance for a Healthier Generation
- National Academy of Medicine Roundtable on Obesity Solutions



Why Quality Matters

Company	Number of Admissions to Reporting Hospitals in 2015 (UHC only)	Total Cost of Medical Errors	Medical Cost Per Admission
Health Action Council Book of Business	17,689	\$33,131,492.00	\$3,742
Potential Savings if all Employees Utilized "A" Rated Hospitals			\$5,229,471
Measure	A Hospital	B Hospital	C-F Hospital
Total Surcharge Per Admission	\$3,403	\$3,947	\$4,182
Potential Savings Per Admit:			
Employee switching from B to A Hospital:			\$544
Employee switching from C-F to B Hospital:			\$235
Employee switching from C-F to A Hospital:			\$779
Employee switching from C-F to A/B (A & B Surcharge Average = \$3,675)			\$507

Higher Quality Graded Hospitals Save Plan Sponsors Money



Enriching Communities



health action council



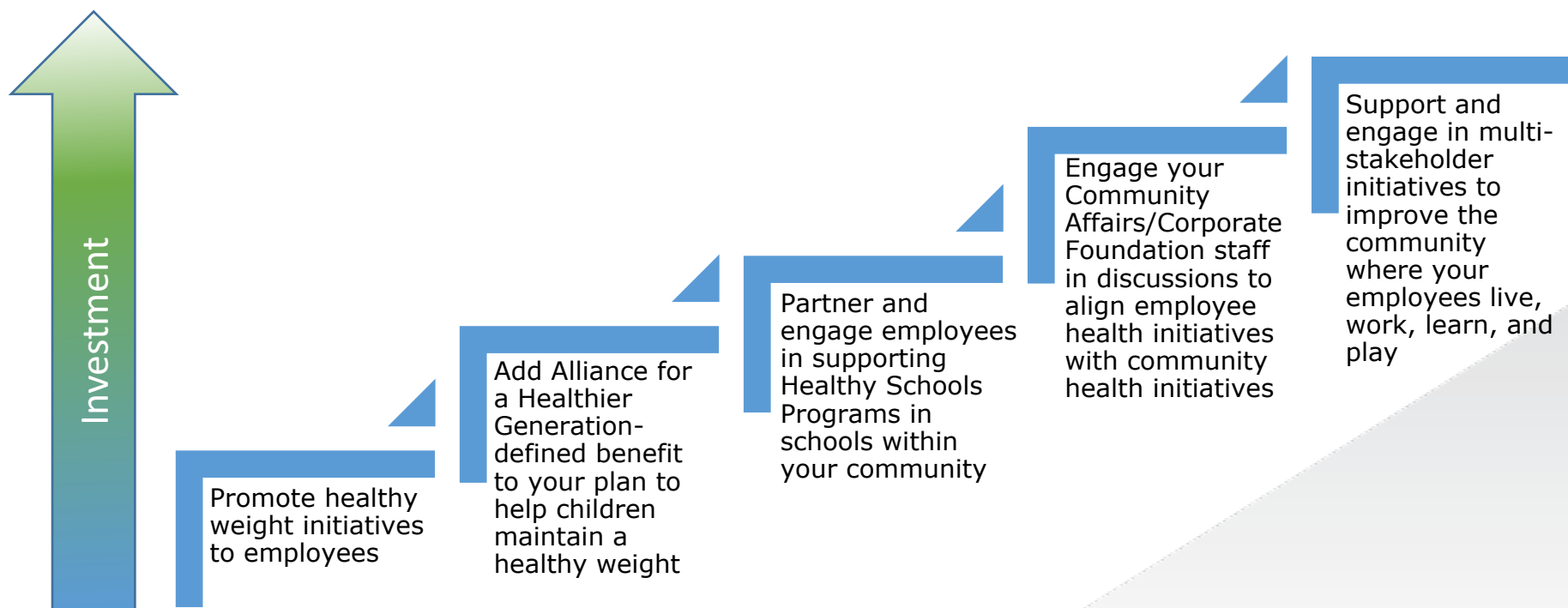
Save Today...And Tomorrow

- **CDC Fact: Childhood obesity has more than doubled since 1990**
 - 5% - 7% in 1980
 - 17.2% in 2014
- **CDC Fact: Obesity in children leads to chronic conditions as adults**
 - Type 2 Diabetes
 - Osteoarthritis
- **US Department of Transportation Fact**
 - Average distance from home to work: 15 miles or less
- **Pew Research Fact**
 - The average American lives 18 miles from their mother

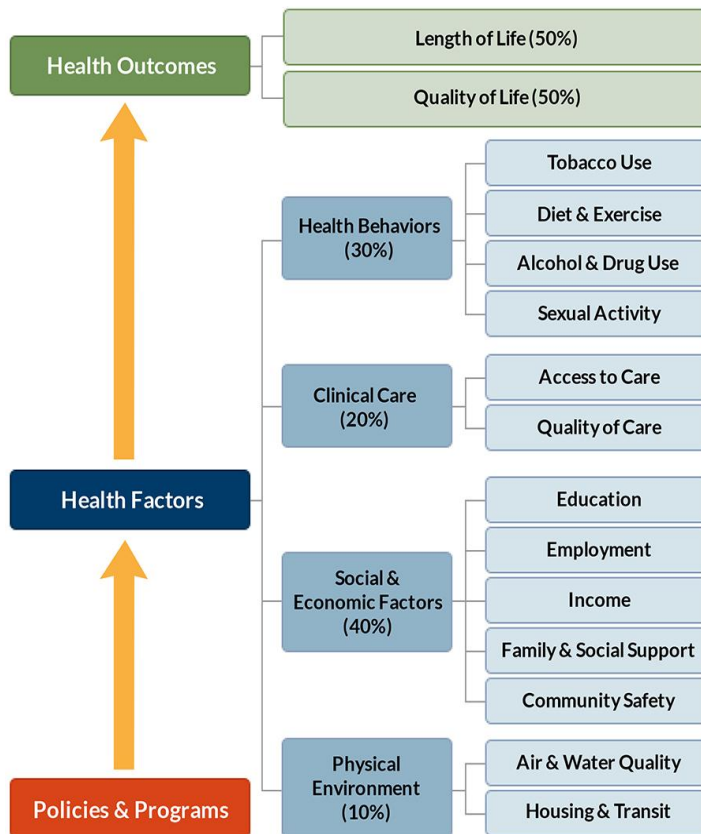
Add it up: An overweight child attending school near your workplace may be covered by your benefits plan today and likely to work for your company in the future. Employers can get involved to save today and build a healthier workforce for tomorrow.



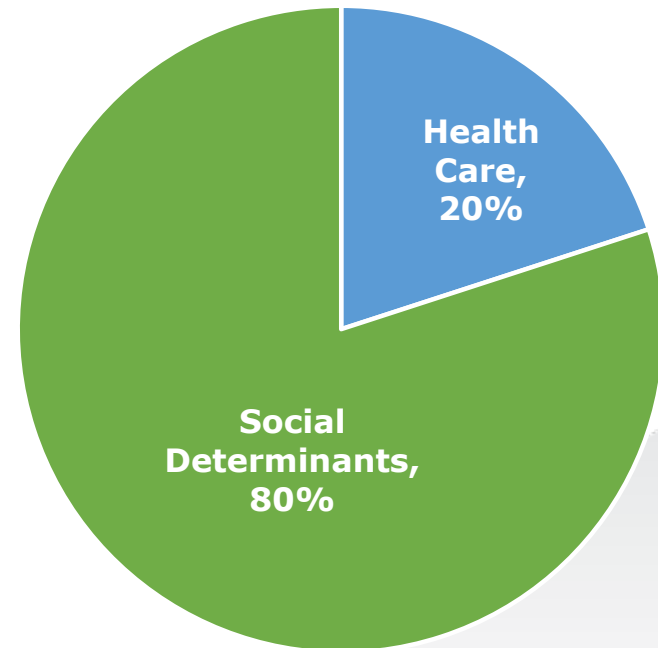
Community Involvement Continuum



The Big Picture of Health



County Health Rankings model © 2014 UWPHI





Join Us!



health action council



How To Get Involved

Membership	Investment	Annual Total
Employer Membership	\$2.75 per employee/ retiree	Minimum \$1,000 Maximum \$8,000
Public Employer/ Community Non-Profit	\$1,000 (see note)	\$1,000
Supporter	\$1,500 Classic \$3,000 Premium	Minimum \$1,500 Maximum \$3,000

Note: Public and Community Non-Profit Employers pay Employer Membership if/when they access group purchasing programs

Kevin Gregory, Director Business Solutions

kgregory@healthactioncouncil.org

216.236.0379 (office)

216.269.3127 (mobile)